

DESCRIPTION

SloanStone® Solid Surface 3-Station Wall-Mounted Wash Fountain Sink.

DETAILS

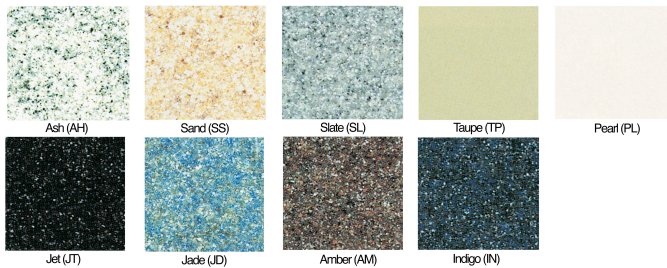
- Material: SloanStone Solid Surface
- Width: 36" (914mm)

FEATURES

Triple Station Lavatory System with Sloan Electronic Sensor Technology with the following features:

- Lavatory constructed of Non-porous SloanStone Solid Surface Material
- Lavatory supported by a heavy duty, 14 gauge, Type 304 stainless steel, brushed stainless Pedestal with 14 gauge galvanized steel Mounting Plate
- Single continuous basin design
- Stainless steel drain cover with 1 1/2" drain spud
- Sloan Optima Electronic Sensor Technology for hands free operation
- Lavatory System is shipped pre-plumbed with Sloan Electronic Controls for easy installation
- Below deck Thermostatic Mixing Valve, standard
- Front access panels for easy maintenance access

COLORS



COMPLIANCES & CERTIFICATIONS



IGC156

(ADA Compliant, BAA Compliant, cUPC Certified, IGC156)

RECOMMENDED SPECIFICATION

SloanStone Series Sink model no. EWF 4X000 Washstation Style Sink. Product to be molded using SloanStone solid surface. Sloan integrated automated sensor faucets. Sink design to be ADA compliant and IAPMO certified. Supplied with enclosure.

DOWNLOADS

- [EWF 40000 Installation Instructions](#)
- [EWF-40000 Series Repair and Maintenance Guide](#)
- [Additional Downloads](#)

NOTES

All information contained within this document subject to change without notice.

Looking for other variations of the EWF-43000 product? [View the general spec sheet with all options.](#)

[Find a compatible faucet](#) for this sink.

[Find a matching soap dispenser](#) for this sink.

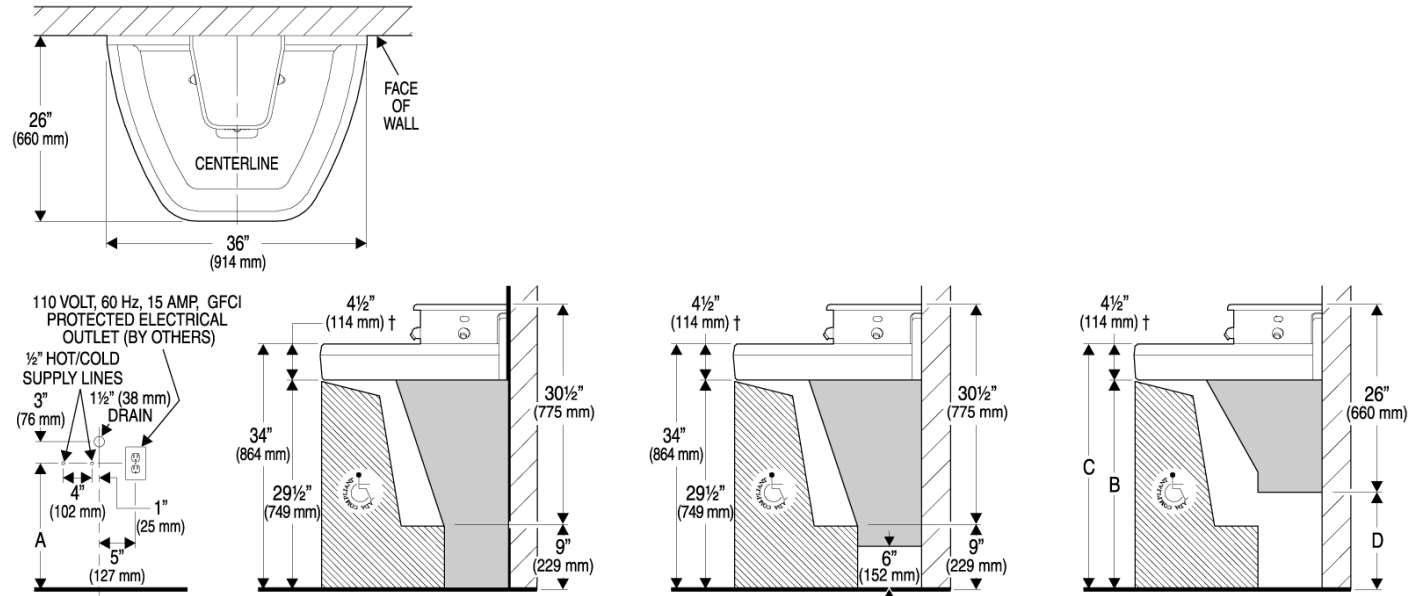
WARRANTY

[View Warranty Information](#)

Sloan 10500 Seymour Ave, Franklin Park, IL 60131

Phone: 800.982.5839 • Fax: 800.447.8329 • sloan.com

ROUGH-IN



FROM AUTOCAD, SIZE WITDH TO HERE

THEN SEPARATE (SPACE) DRAWINGS AS SHOWN ABOVE